



MODEL NUMBER:  
**DC1G-1500**

**4-Port Dual  
Directional Coupler**

### DESCRIPTION:

**4-Port Dual Directional Coupler** employs two, 3-Port Uni-Directional Couplers, internally connected, in tandem, providing measurement of both forward and reverse power. Ideal for simultaneously monitoring a system's forward and reverse power and for reflectometer measurements. Unlike the Bi-Directional Coupler, the directivity of the Dual Directional Coupler is unaffected by the loads on the coupled ports.

### ELECTRICAL SPECIFICATIONS

Frequency	80 - 1000 MHz
Power	1500 W CW
Coupling	50 ± 1.0 dB Max.
Insertion Loss	0.1 dB Max.
Flatness	± 0.3 dB Max.
VSWR (ML)	1.20:1 Max.
Directivity	20 dB Min.

### MECHANICAL SPECIFICATIONS

Type	Connectorized
Material	Aluminum 6061-T6
Surface Finish	<ul style="list-style-type: none"> <li>• Chem. Film Per MIL-DTL-5541F</li> <li>• Type I Class 3 (Yellow Iridite)</li> <li>• RoHS Compliant Available</li> </ul>
Operating Temperature	-55°C to +75°C
Storage Temperature	-60°C to +85°C
Humidity	95% Non-Condensing
Size	3.0 x 3.0 x 1.09"

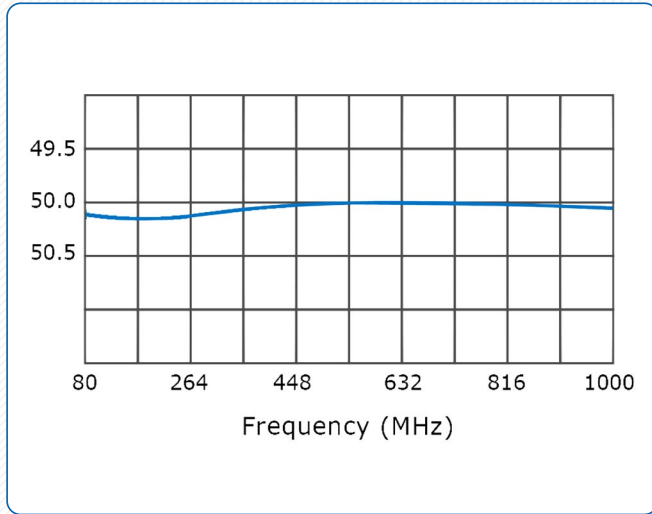
### CONNECTOR CONFIGURATIONS

Input (J1)	Output (J2)	Fwd (J3)	Rev (J4)
N Female	N Female	N Female	N Female

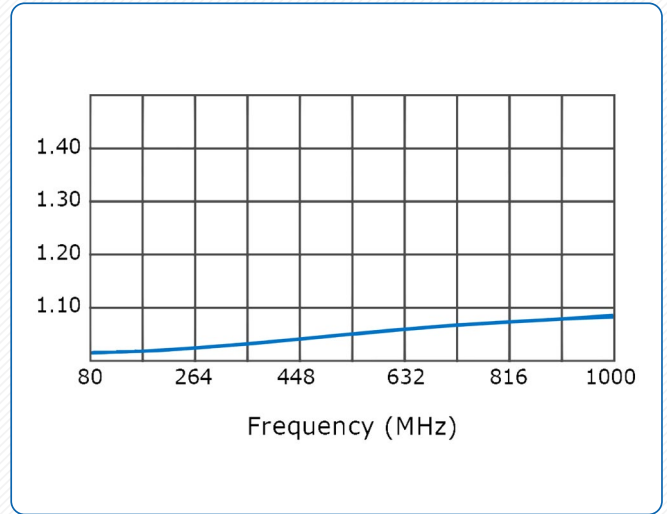
## PERFORMANCE DATA

(Specifications subject to change without notice):

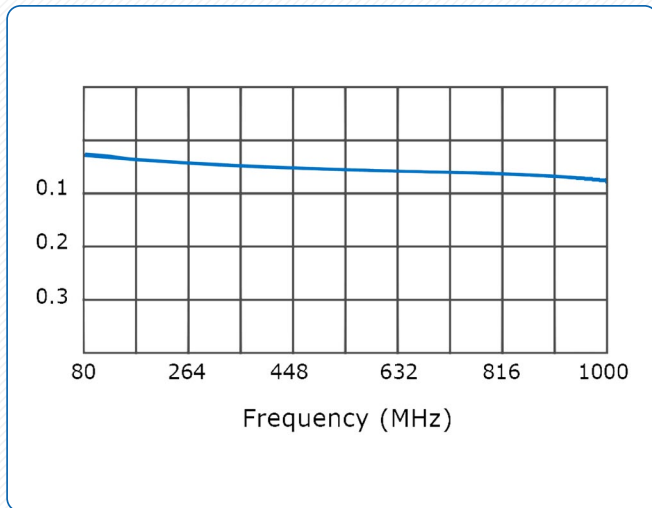
### Coupling



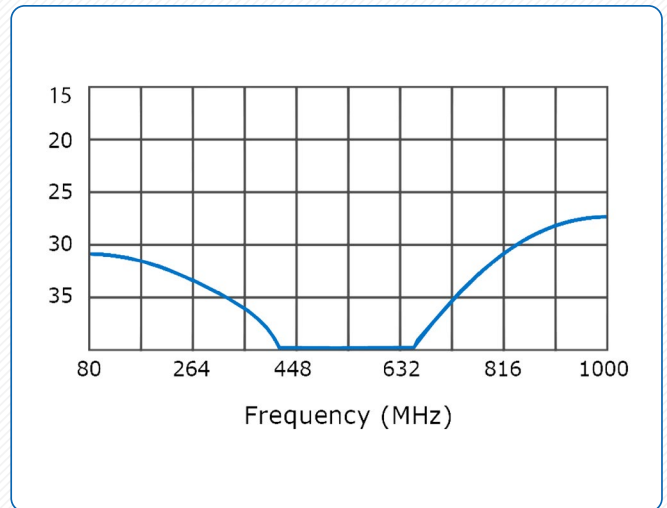
### VSWR



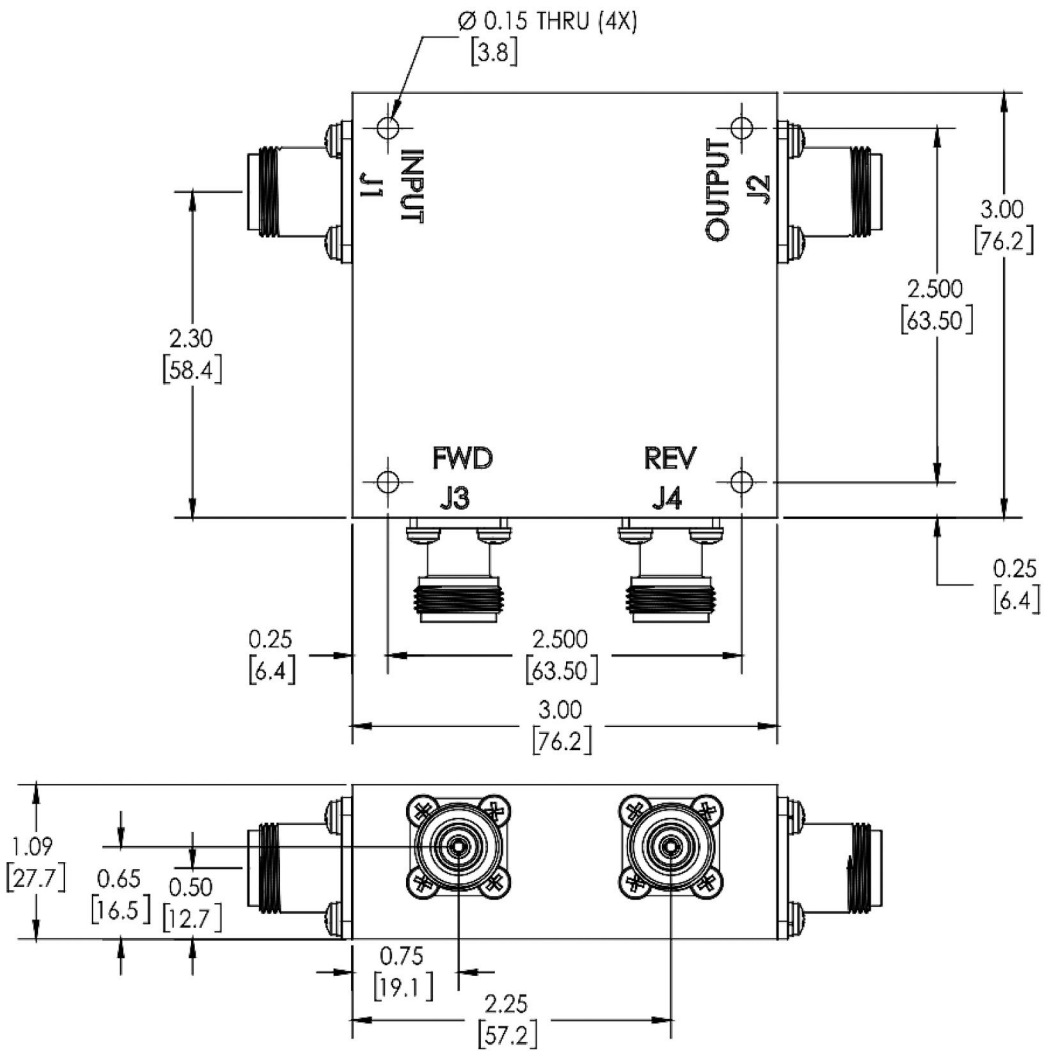
### Insertion Loss



### Directivity



**OUTLINE DRAWING**



**NOTES: UNLESS OTHERWISE SPECIFIED**

1. MATERIAL: ALUMINUM 6061-T6
2. FINISH: CHEM FILM PER MIL-DTL\_5541F TYPE I CLASS 3 (YELLOW IRIDITE)

